

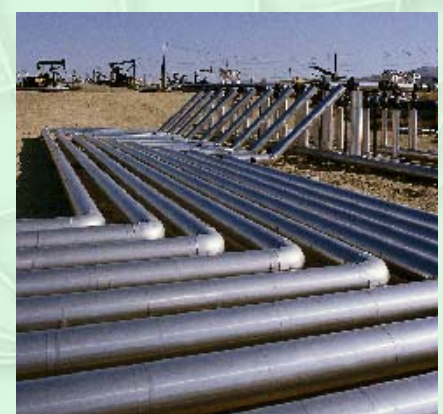


## Engineering Fitness-For-Service Assessment Software

- **Decision-support software designed to assist engineers in evaluating the integrity of pipework, pipelines, pressure equipment and high temperature structures**
- **All assessments are rigorous applications of the relevant fitness-for-service standards or procedures, e.g. API RP 579, BS 7910**
- **Leading software developed by fitness-for-service specialists**

### Features and benefits

- A wide range of assessment types for different damage mechanisms affecting critical equipment
- Calculation of critical flaw dimensions, safe continued operating loads to applicable international standards
- Assessment management based on equipment with possible multiple assessments for each piece of equipment
- Allows the determination of limiting conditions for design, operation and life extension of the assessed component
- High quality output (hardcopy and PDF) for integrating into your final reports without any further effort
- Choice of SI and US units
- Current revision assessment types available:
  - Level 1 crack-like flaw assessment to API RP 579
  - Creep rupture assessment to API 530
  - Welded joint assessment to BS 7608
  - Metal loss due to corrosion to B31.G
  - Metal loss due to corrosion to BS 7910



**ENGFit™ is a TWI software product**

## Applications

The fitness-for-service (FFS) concept is an accepted practice throughout the engineering community. The assessment procedures are routinely applied in a range of industries including:

- Pressure vessels and pipework
- Pipelines – on and offshore
- Offshore structures
- Storage tanks
- Buildings
- Bridges
- Ships
- Aircraft
- Other structural components

## Minimum specification

- Pentium PIII, 256MB RAM, screen resolution 800 x 600, 50MB free disk space

## Recommended specification

- Pentium 4, 512MB RAM, screen resolution 1024 x 768, 50MB free disk space

## Training

**ENGFit™ Training Workshop – 1 day training workshop** intended for engineering staff involved in fitness-for-service assessment

### **Fitness-for-Service Assessment, based on API 579 – 3 day course**

Covers the latest technologies for run/repair/replace decisions as well as Level 1 and Level 2 FFS assessment. It is aimed at plant inspectors, operators and other plant engineers responsible for managing the integrity of ageing process equipment, pipelines, boilers and storage tanks.

### **Free download**

To download a free copy of the software, go to [www.twisoftware.com](http://www.twisoftware.com)

## TWI Software

### TWI Ltd

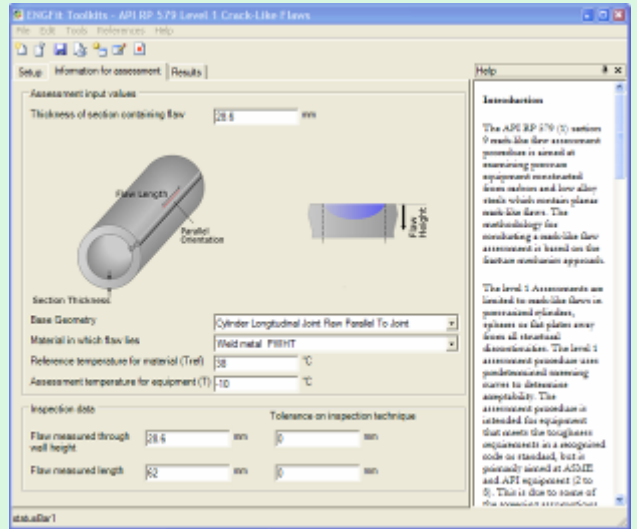
Granta Park, Great Abington  
Cambridge CB1 6AL, UK

Tel: + 44 (0) 1223 891162

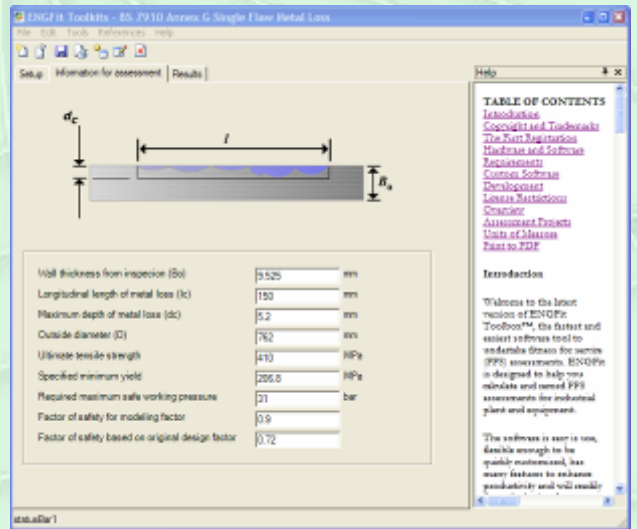
Fax: + 44 (0) 1223 892588

E-mail: [engfit@twi.co.uk](mailto:engfit@twi.co.uk)

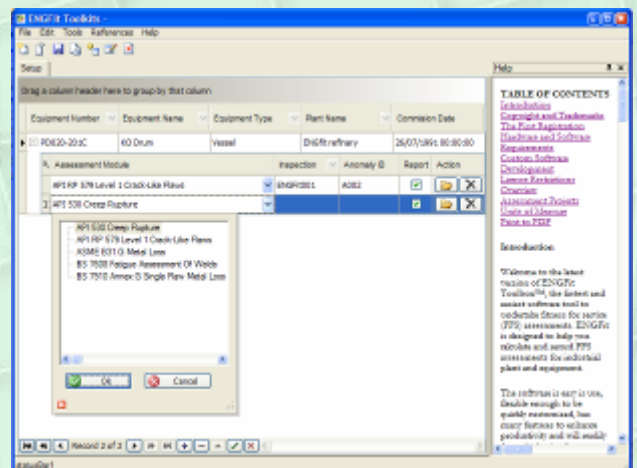
Website: [www.twisoftware.com](http://www.twisoftware.com)



Crack-like flaw assessment of a longitudinal seam weld in a cylinder to API RP 579



Metal loss assessment to BS 7910 Annex G



Management based on equipment with multiple assessments available

